



THE AUTOMOTIVE LIGHTING BENCHMARK

INSTALL GUIDE

FERRARI F355 XB LED FOGS



WARNING: IT IS THE INSTALLERS RESPONSIBILITY TO CONFIRM COMPLIANCE WITH STATE AND LOCAL LAWS. BY READING THIS DOCUMENT, YOU AGREE IT IS ONLY TO BE USED AS AN EDUCATIONAL GUIDE. MORIMOTO LIGHTING NOR ITS DEALERS MAKE GUARANTEES ON ANY FINISHED RESULTS, NOR ARE THEY TO BE HELD RESPONSIBLE FOR ANY DAMAGE, MISUSE, OR PERSONAL INJURIES. IF YOU ARE UNABLE TO CLEARLY UNDERSTAND AND ADAPT THE INFORMATION BELOW, PROFESSIONAL INSTALLATION IS RECOMMENDED.



1995-1999 FERRARI F355

TABLE OF CONTENTS

- **INSTALLATION INSTRUCTIONS** ----- **PAGE 3**
- **AIMING ADJUSTMENTS** ----- **PAGE 5**
- **REASSEMBLY** ----- **PAGE 6**

PACKAGE CONTENTS



1X PAIR OF FOG LIGHTS



2X FOG LIGHT CONNECTORS



6X ALIGNMENT SPACERS

REQUIRED TOOLS

- **JACK OR LIFT**
- **PHILLIPS HEAD SCREWDRIVER**
- **RATCHET**
- **10MM SOCKET**

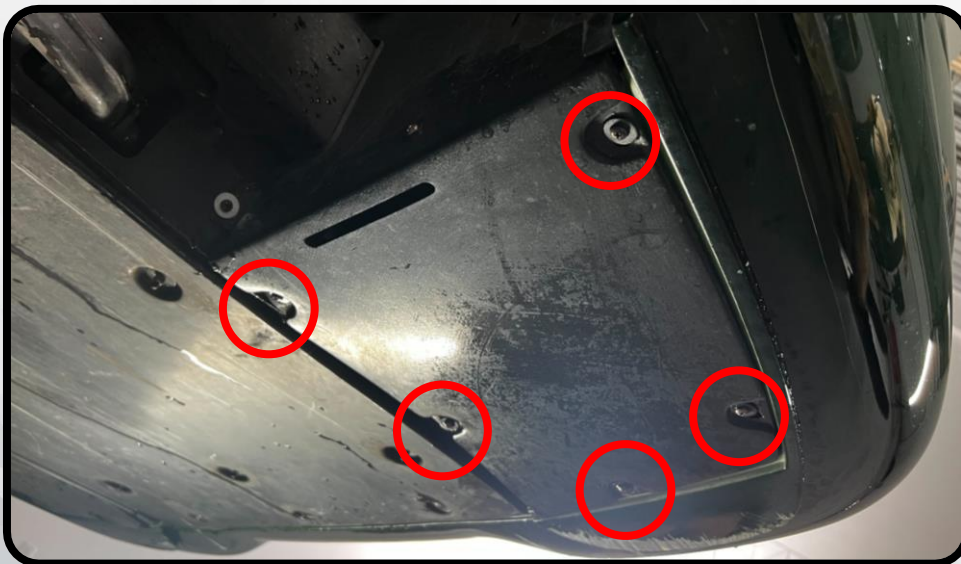


INSTALLATION PROCEDURE

1. JACK UP OR LIFT THE CAR SO THAT YOU CAN ACCESS THE UNDER TRAY. MAKE SURE THAT THE CAR IS SAFELY SUPPORTED BEFORE GETTING UNDERNEATH IT
2. THROUGH THE WHEEL WELL, REMOVE THE PHILLIPS HEAD SCREW IN FRONT OF THE WHEEL THAT HOLDS ON THE OUTER-FRONT UNDERTRAY

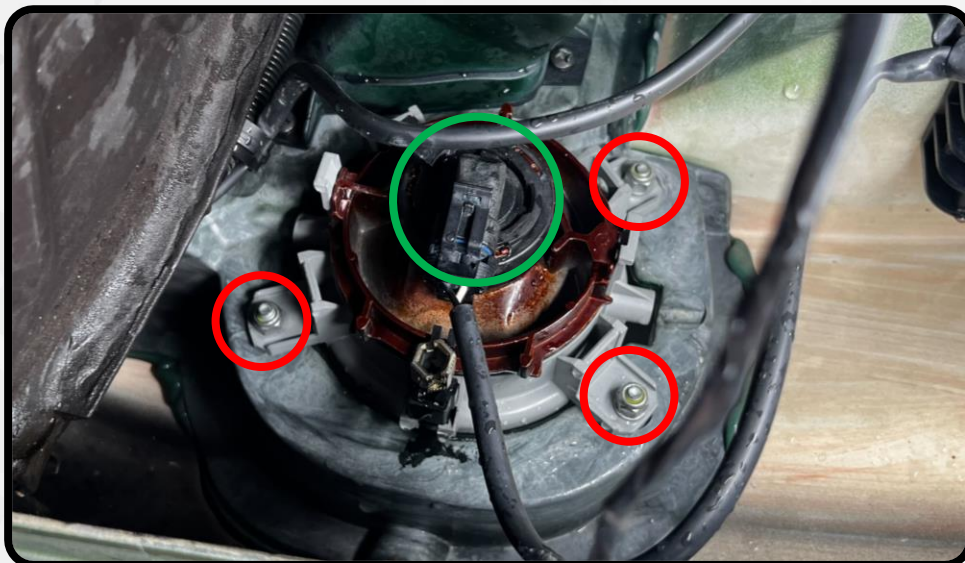


3. FROM UNDERNEATH THE CAR, REMOVE THE 5 REMAINING PHILLIPS HEAD SCREWS HOLDING ON THE OUTER-FRONT UNDER TRAY. ONCE THE SCREWS ARE REMOVED, PULL THE PANEL FROM THE CAR

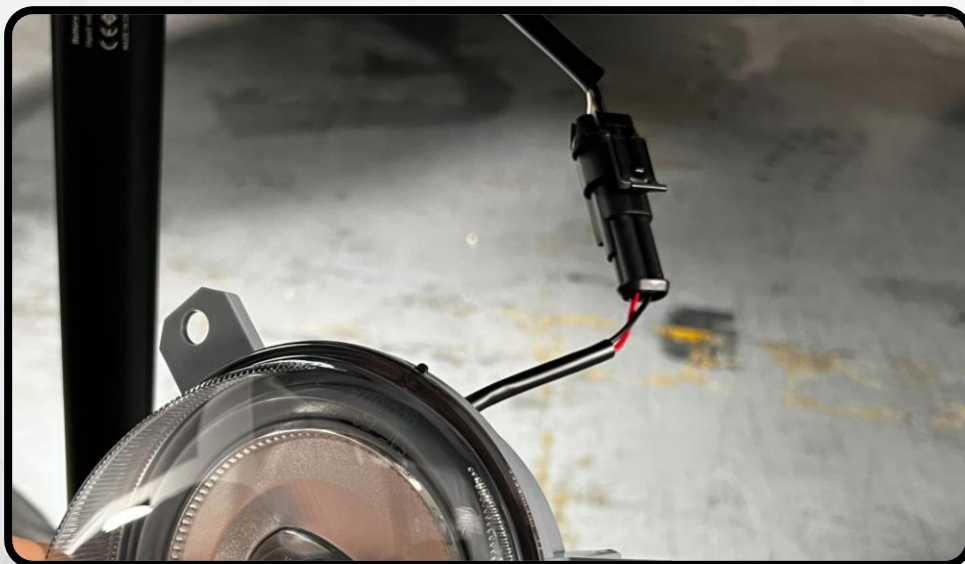


INSTALLATION PROCEDURE

- UNPLUG THE HARNESS FROM THE FOG LIGHT BULB (GREEN), AND REMOVE THE 3 10MM NUTS HOLDING ON YOUR FACTORY FOG LIGHT ASSEMBLY (RED)



- INSERT THE PINS XB FOG LIGHT PINS INTO THE PROVIDED CONNECTORS, MATCHING RED TO WHITE, AND BLACK TO BLACK, ON THE VEHICLE SIDE

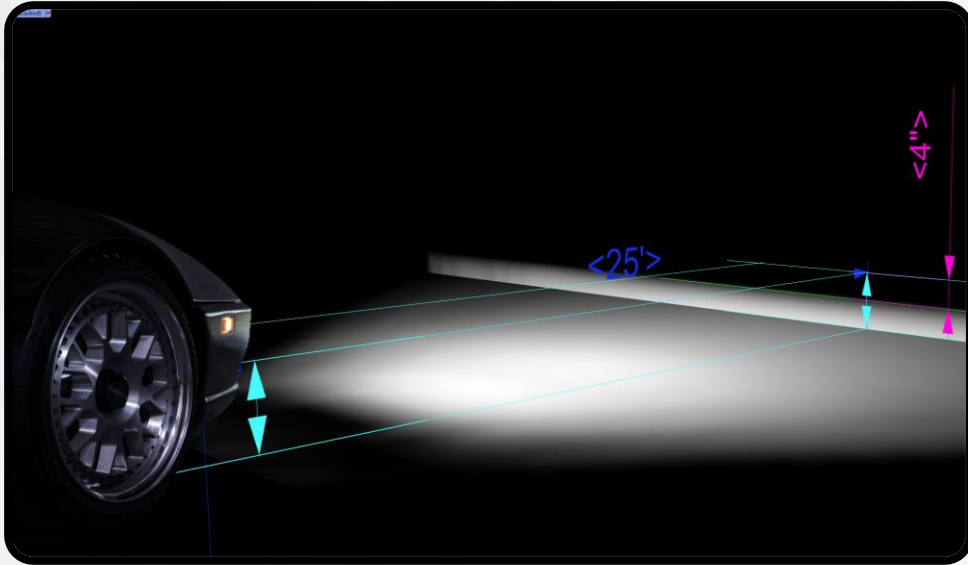


- INSTALL THE NEW XB FOG LIGHT WHERE YOU REMOVED THE FACTORY LIGHT, AND PLUG IT IN
- REPEAT STEPS 2-6 FOR THE OTHER SIDE

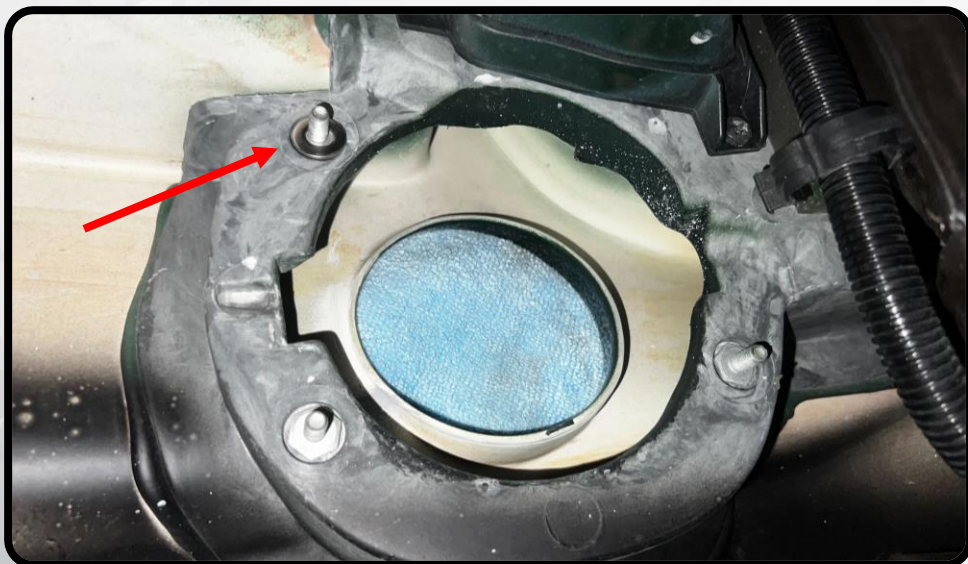


AIMING INSTRUCTIONS

- TURN THE CAR/FOG LAMPS ON AND CONFIRM THE LIGHTS ARE INSTALLED/FUNCTIONING CORRECTLY
- BEFORE YOU REINSTALL THE UNDERTRAY, LOWER THE CAR BACK DOWN, AND TAKE THIS TIME TO ENSURE YOUR LIGHTS ARE PROPERLY AIMED
- WITH THE CAR PARKED ON LEVEL GROUND, 25' FROM A WALL, MEASURE THE DISTANCE FROM THE GROUND TO THE CENTER OF THE FOG LIGHT, AND THE DISTANCE FROM THE GROUND TO THE TOP OF THE LIGHT'S BEAM ON THE WALL. THERE SHOULD BE A 4" DROP FROM THE CENTER OF THE FOG LIGHT ON THE CAR, TO THE TOP OF THE BEAM ON THE WALL



- THE LIGHTS SHOULD BE PROPERLY AIMED OUT OF THE BOX, BUT IF ANY ADDITIONAL ADJUSTMENT IS NEEDED, ADD THE INCLUDED SPACERS TO THE STUDS TO DIAL IT IN. IF THE BEAM NEEDS TO MOVE DOWN, ADD A SPACER TO THE TOP STUD, AND VISEVERSA. ONE SPACER SHOULD SHIFT THE BEAM BY APPROX. 3" AT 25'



REASSEMBLY

12. REINSTALL THE NEW FOG LIGHT ONCE AIMING IS COMPLETE BY REINSTALLING THE 310MM NUTS UNTIL HAND TIGHT
13. REASSEMBLE THE UNDERTRAY IN THE REVERSE ORDER YOU DISASSEMBLED IT



- ENJOY YOUR NEW XB FOG LIGHTS! -

